



# GMT MONTHLY MEMBERSHIP PROGRESS REPORT

Results as of: 5/31/2020

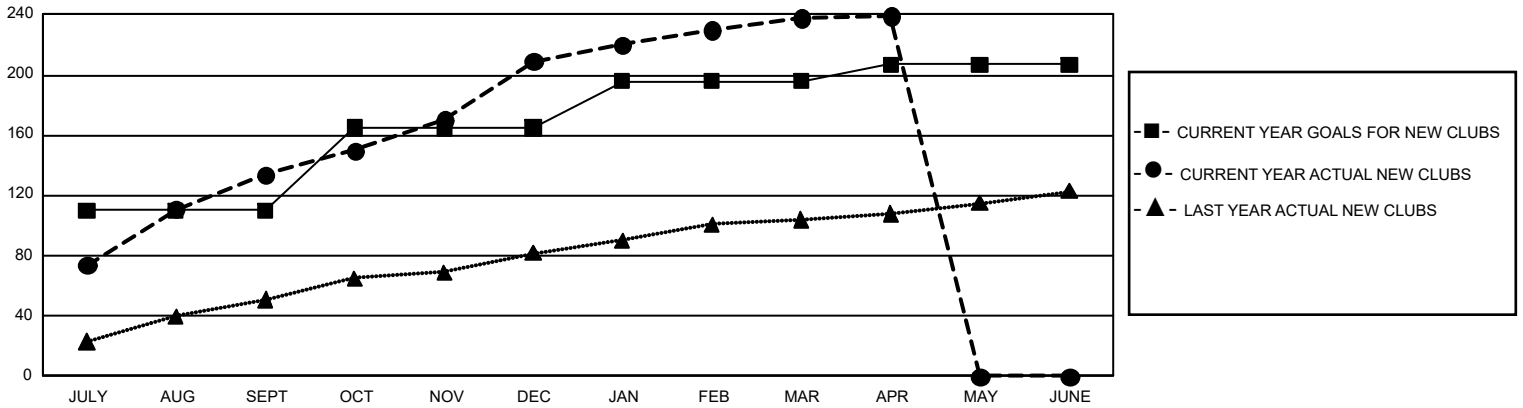
## GMT Constitutional Area 6, Group D

GMT: OPEN

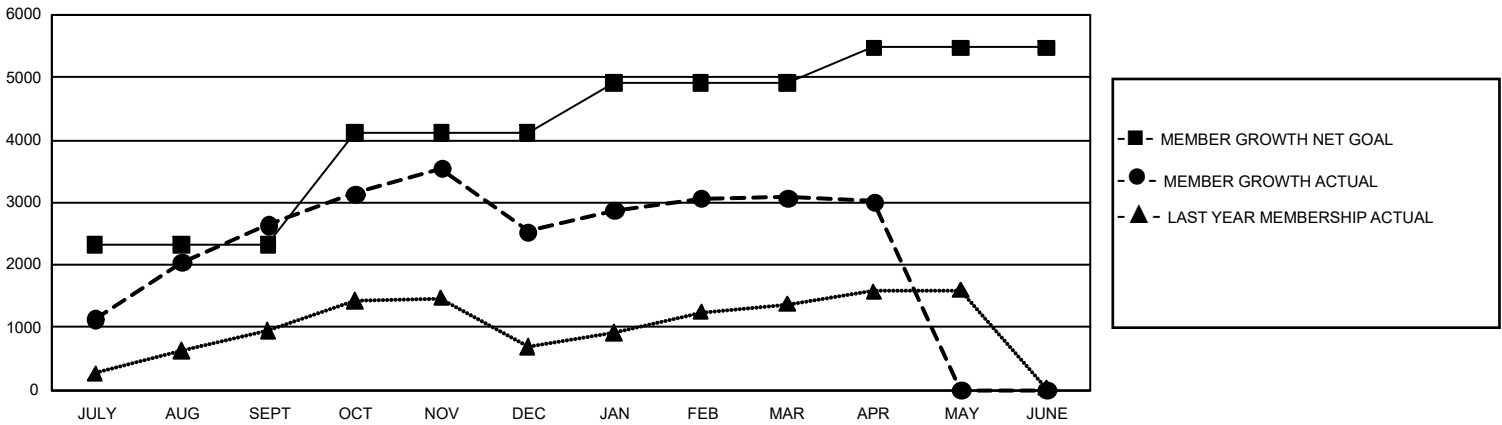
REPORT DOES NOT INCLUDE CLUBS IN UNDISTRICTED AREAS.

Clubs				Members			
RESULTS FOR 2019-2020				RESULTS FOR 2019-2020			
QUARTER	NEW CLUB GOAL	NEW CLUBS	DROPPED CLUBS	QUARTER	MEMBER GROWTH NET GOAL	MEMBER GROWTH ACTUAL	DROPPED MEMBERS ACTUAL (including transfers)
JULY/AUG/SEPT	330	134	3	JULY/AUG/SEPT	6,975	3,814	1,114
OCT/NOV/DEC	165	75	38	OCT/NOV/DEC	5,355	2,324	2,410
JAN/FEB/MAR	93	29	8	JAN/FEB/MAR	2,415	1,366	739
APR/MAY/JUNE	33	1	0	APR/MAY/JUNE	1,680	98	149

**GOALS AND ACTUAL NEW CLUBS CUMULATIVE**



**GOALS AND ACTUAL MEMBERS CUMULATIVE**



DROPPED CLUBS: 49	733 CLUBS OF 1,365 ADDED 1 OR MORE NEW MEMBERS	<b>GENDER DISTRIBUTION</b>
<b>DROPPED MEMBERS</b>	<a href="#">CLICK HERE FOR CUMULATIVE MEMBERSHIP DATA</a>	MALE            24,358 (72.26%)
DECEASED            20		FEMALE        9,351 (27.74%)
CLUB CANCELLED      850		TOTAL FAMILY UNIT MEMBERS            20,852
OTHER                    3,542		FAMILY MEMBERS PAYING HALF DUES            13,063
<b>TOTAL                    4,412</b>		